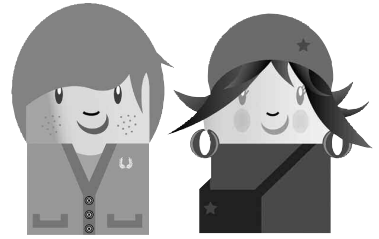


# CLUB



**NEW!**

Online activities at  
[www.maryglasgowmagazines.com/activities](http://www.maryglasgowmagazines.com/activities)

## Dear CLUB teacher,

Welcome to Issue 2 of CLUB. In this issue we look back over two big stories of the year – the life and death of Michael Jackson, and the swine flu pandemic. We also look at changing fashions in 'Social Scrapbook' and preview the next big star of the *Twilight* films.

For this year we've added lots of great new features to our award-winning website ([www.maryglasgowmagazines.com](http://www.maryglasgowmagazines.com)). As well as thousands of resources for teachers, the latest news and Chatter for students, our site now offers a range of online activities. These activities give students instant feedback and are linked to the magazine content – see [www.maryglasgowmagazines.com/activities](http://www.maryglasgowmagazines.com/activities). Every Friday in November there's a CLUB Chatterthon. Students can log in between 3 and 4pm GMT (check the time in your country), and meet other CLUB readers around the world.

To see what else is online and find out how to register, look in the *How To* guide or visit [www.maryglasgowmagazines.com/help](http://www.maryglasgowmagazines.com/help).

If you have any comments on this issue of CLUB or if there are any topics you would like to read about in future issues of CLUB, please do e-mail me. I'm always interested to hear your feedback.

All the best,

**Sarah** [sjohnson@maryglasgowmags.co.uk](mailto:sjohnson@maryglasgowmags.co.uk)



## LANGUAGE POINTS FOR THIS ISSUE NOVEMBER / DECEMBER 2009

**Grammar:** question formation, passives, purpose clauses, (*so that, in order to, due to, because, as a result*)

**Vocabulary:** word formation – introduction to prefixes/suffixes; the financial world

Page	Article	Online activities	CD
Cover / 7, 8 & 9	BEHIND THE HEADLINES Michael Jackson	✓	
2 & 3	UPDATE News Stories	✓	✓ T8
4, 5 & 6	YOUR WORLD Swine Flu: How Safe Are You?	✓	✓ T6
10 & 11	SOCIAL SCRAPBOOK Fashion	✓	✓ T7
12 & 13	THE PULSE <i>The Apprentice</i>	✓	
14	HEROES Remembering D-Day		
15	THE TEST FACTOR <i>Sherlock Holmes</i> , Lily Allen	✓	
16	THE NEXT BIG THING Taylor Lautner		

## Magazines Plus! In print, in class and online!

[www.maryglasgowmagazines.com](http://www.maryglasgowmagazines.com)

### How do teachers register?

- 1 Enter your teacher code. This will be sent to you on a card if you have more than 10 subscriptions.
- 2 Enter a secret password.
- 3 Enter your e-mail address.



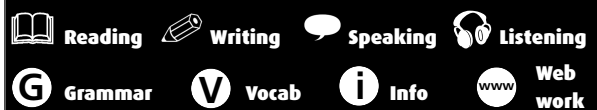
### How do students register?

- 1 Enter the CLUB students' code: purplehat.
- 2 Enter a user name (this doesn't have to be their real name).
- 3 Enter a secret password.
- 4 Enter their e-mail address.

If you or your students registered last year, just add the new code to the old account.

See your free 'How to' web guide for full details.  
 For help, e-mail: [contactus@maryglasgowmags.co.uk](mailto:contactus@maryglasgowmags.co.uk)

## KEY TO ICONS



## Cover / Pages 7, 8 & 9

### BEHIND THE HEADLINES



#### Lead-in

Show students the picture on page 7, and ask: *What do you know about Michael Jackson? Can you name his hit songs / albums? Do you like his music?*

#### Reading

Students read the article and put these headings in order according to each section:

- a) *A troubled childhood*
- b) *Solo success*
- c) *Sudden death shock*
- d) *Fame and (mis)fortune*
- e) *This is it*

f) *Global impact*

[Answers: c; f; e; a; b; d]

**Writing**

Students write a paragraph starting with this statement: *I would / would not like to be a celebrity or pop star because....* They can consider elements from the article such as: worldwide fame and fortune; media intrusion and being in the public eye; a public versus private life; impact on family and friends and so on.

**Pages 2 & 3 UPDATE**



**FARM FOR THE FUTURE?**

Ask: *What do you think of the idea of putting housing and offices with farm space? Do you think this idea will work? Why / why not? Would you like to live in a space like this? Why / why not?*

**THE SUSAN FACTOR**

Discuss: *Imagine you are going to audition for a reality TV show. Which programme would you audition for, what would you perform and why?*

Watch Susan Boyle's audition for Britain's Got Talent by searching for 'Susan Boyle' on [www.youtube.com](http://www.youtube.com).

**ENGLISH GETS ITS MILLIONTH WORD!**

Students match the new words on page 3 to their definitions:

1. recessionista (n)	a. a low-paid job that doesn't need many skills
2. credit crunch (n)	b. someone who lives in conditions like an animal
3. de-friend (v)	c. the sudden rise in popularity of the American presidential candidate
4. slumdog (n)	d. someone who tries to stay fashionable on a small budget
5. McJob (n)	e. when there is less money available
6. Obamamania (n)	f. to remove a person from your friend list on a social networking site

[Answers: 1. d; 2. e; 3. f; 4. b; 5. a; 6. c]

**Pages 4, 5 & 6 YOUR WORLD**



**Background**

The outbreak of swine flu this year is a new strain of a virus which began in Mexico. In June the World Health Organisation (WHO) declared the outbreak to be a pandemic. There were three flu pandemics in the 20th century: 1918 Spanish flu over 50 million people died; 1957 Asian flu two million died; 1968 Hong Kong flu up to one million deaths. The numbers of deaths decreased each time because of improved medication.

**Lead-in**

Write 'swine flu' on the board and ask: *What do you know about swine flu? Have you been paying attention to the media coverage, or ignoring it because you think it won't affect you?*

**Reading comprehension**

1. Students scan the article to work out what significance these numbers have: 570, 100,000, 40, 15

[Answers: 570 = the number of years Eton College had remained open before closing as a result of swine flu; 100,000 = the number of new cases a day health officials predict there will be before autumn; 40 = the number of years since the world's last flu pandemic; 15 = the average age of hospitalised patients in the US and UK this summer.]

2. Students put these ideas in the order they appear in the article:

- Some teenagers have had strong reactions to the virus.*
- Many people with the virus get better without going to hospital or taking drugs.*
- Some people in Australia are trying to catch swine flu in order to become immune.*
- It is now impossible to stop the virus according to WHO.*
- Health experts do not know how many people will catch the virus this winter.*
- Some schools in the US have closed because of swine flu panic.*

[Answers: 1. d; 2. b; 3. a; 4. f; 5. c; 6. e]

**Speaking**

Students discuss these questions:

*Are you worried about swine flu? Has it made you change your behaviour? Do you know anyone that has had swine flu? Has the media exaggerated swine flu?*

Students can then watch the video on swine flu at [www.maryglasgowmagazines.com/video](http://www.maryglasgowmagazines.com/video). Ask: *Do these Londoners have the same opinions as you?*

**Pages 10 & 11 SOCIAL SCRAPBOOK**



**Background**

Twiggy – Britain's first supermodel – also starred in movies (most famously *The Boyfriend*, 1971) and was a judge on the reality show *America's Next Top Model*. She now appears on adverts for Marks & Spencer. Mary Quant named the mini-skirt after her favourite car – the Mini!

**Lead-in**

Ask: *What are the most popular fashion items among teenagers at the moment? Is there one key piece of clothing that everyone wants to wear? Is it important to be fashionable?*

**Reading comprehension**

Students decide whether the following statements are true or false based on what they read in the article.

- Mary Quant played an important part in the fashion of the 1960s.*
- Twiggy always thought she looked great.*
- Many shops like Topshop and Oasis have suffered in the recession.*
- High street shops are now more popular than boutiques.*
- ASOS.com changes its online shop once a week.*
- Agyness Deyn only wears vintage clothes.*

[Answers: 1. True; 2. False. She hated her look at first. 3. True. 4. True. 5. False. It updates its online shop every day. 6. False. She wears new and vintage clothes.]

**Grammar - passives**

Students transform these active phrases into the passive:

1. A model scout discovered Twiggy when she was 16 years old.
2. Girls everywhere copied Twiggy's new look.
3. The mini skirt transformed the way girls dressed.
4. Agyness Dean influences fashion in London today.
5. Shops like Warehouse have replaced boutique stores.
6. The recession has hit many high street shops.

[Answers: 1. Twiggy was discovered when she was 16 years old by a model scout. 2. Twiggy's new look was copied by girls everywhere. 3. The way girls dressed was transformed by the mini skirt. 4. Fashion in London today is influenced by Agyness Dean. 5. Boutique stores have been replaced by shops like Warehouse. 6. Many high street shops have been hit by the recession.]

**Pages 12 & 13 THE PULSE**



**Background**

The Apprentice is a reality TV show that was developed in the U.S. but now has many international versions. The British version sees 15 candidates compete for a highly paid apprenticeship with tycoon Sir Alan Sugar.

**Lead-in**

Ask: What different types of TV reality show can you think of? Which ones do you watch?

**Grammar - modal verbs for obligation**

After reading the article, students reread to find key vocabulary for job hunting. Suggestions might include interview (n), interviewer (n), candidate (n), earn (v), task (n), to be hired (v), to be fired (v), communication (n), enthusiasm (n).

Students work in pairs to write down five top tips for getting a job using these modal verbs for obligation and the vocabulary from the article: *must / have to / should / ought to*. For example: *You should always look smart when you go to an interview; You ought to be polite to the interviewer. You must have enthusiasm.*

**Speaking**

Students discuss these questions: *Do you like reality television? Do you think it's good entertainment or a waste of time? Would you ever go on a reality TV show? If so, which one and why, and if not, why not?*

**Page 14 HEROES**



**Background**

Throughout the world the poppy is a symbol of remembrance for those who died in war. It began following the complete devastation in Flanders, Belgium during World War I – the only thing that survived was the poppy and this gave hope to those who continued to fight.

**Grammar - narrative tenses**

Narrative tenses are verb tenses that we use when we retell a story that happened in the past.

Write these sentences on the board. Students complete the phrases using narrative tenses to summarise the story.

1. Bob Sales \_\_\_\_\_ a soldier in the army on 6th June 1944. (be)
2. When he \_\_\_\_\_ the boat he fell into the water. (get off)
3. He \_\_\_\_\_ to take the heavy radio off and come back up to the surface. (be able)

4. Bob's captain was shot and he \_\_\_\_\_ into the water. (disappear)
5. Many other soldiers \_\_\_\_\_ as they were hit by bullets. (die)
6. Bob got to the beach and was one of the few that \_\_\_\_\_ . (survive)
7. He \_\_\_\_\_ believe how many people died that day. (can not)

[Answers: 1. was; 2. got off; 3. was able; 4. disappeared; 5. died; 6. survived; 7. could not]

**Speaking**

Ask: *What do people in this country do to remember the dead? Are there any national remembrance events? Do you think we should do more / less to remember those who died in war?*

**Page 15 THE TEST FACTOR**



**THE FILM: SHERLOCK HOLMES**

Students write a review of a film they have seen recently. It could include film type (action, adventure, romance, comedy, horror), main characters, basic plot, setting and the student's opinion. Would they recommend it?

**THE TOUR: LILY ALLEN**

Ask: *Do you like Lily Allen? Do you know her music? Which songs do you know? Who is your favourite singer/musician/group? Why do you like them? Have you seen them perform live?*

**Page 16 THE NEXT BIG THING**



**Lead-in**

Show students the picture of Taylor and ask: *Do you know who this is? Which films is he in? What do you know about the 'Twilight' series?*

**Reading comprehension**

Students read the article and match the phrasal verbs to their definitions in this context:

put on (weight)	become too big
give up	maintain
grow out of	train
keep up	stop doing something
work out	increase

[Answers: put on = increase; give up = stop doing something; grow out of something = become too big; keep up = maintain; work out = train]

**Speaking**

Students watch the trailer at [www.twilightthemovie.com](http://www.twilightthemovie.com) and discuss these questions:

*Do you like the 'Twilight' films? Have you read the books that the films are based on? What other films have you seen that are based on books? Do you think good books can be made into good films? Give some examples.*

**ANSWERS**

**LISTENING ACTIVITIES**

ACTIVITY 1: 1. Katie; 2. Craig; 3. Carrie; 4. Omar; 5. Carrie; 6. Kate

ACTIVITY 2: Ask your students to check their answers against the tapescript.

ACTIVITY 3: 1. He is a big fan of hers. He thinks she's sexy, she's stylish and she can sing.; 2. No; 3. No; 4. Their weight. How they dress.; 5. He is a bit over-weight so there are fewer people like him.; 6. Yes



# CLUB LISTENING ACTIVITIES



CD 1 2009

Name: \_\_\_\_\_

Age: \_\_\_\_\_

Date: \_\_\_\_\_

## Track 6: Swine flu

Four people text in to the radio show – Carrie, Katie, Craig and Omar. Answer these questions with one of their names.

1. Who knew someone who went to Mexico?
2. Who knew someone who had swine flu?
3. Whose exams dates changed because of swine flu?
4. Who thinks the government wasted money sending leaflets?
5. Whose school closed because of swine flu?
6. Who started washing their hands more often?



## Track 7: Shopping in London

Write the comments that you hear about these different places to go shopping.

Westfield and Bluewater shopping centres	King's Road and Carnaby Street	Camden and Brick Lane



## Track 8: Do looks matter?

Listen to the teens talking about whether looks are important for being a successful popstar, then answer these questions.

1. What does Rick think of Beth Ditto?
2. Does Nathan think Susan Boyle will be successful?
3. Does Alexa think Susan Boyle has a good voice?
4. What two things does Jenny think girls feel under pressure about?
5. What sometimes helps Rick at auditions?
6. Do Alexa and Jenny like reading magazines that are unkind about celebrities?

