

NATIONAL POETRY DAY

25th
anniversary

3RD OCTOBER 2019

The truth

*A National Poetry Day
resource created
by Apples and Snakes*

Key stage 4



Apples and Snakes produces exciting, engaging and transformative work in performance and participation.
www.applesandsnakes.org

The truth

pearly whites equal currency/ the Gods know me personally/
lose a tooth/ exchange it for a pound/ call it an offering/ in
2002 I found out that the sky was a distorted mirror/ just like
people, planes are bigger and better when they are grounded/
December, an airport lounge/ wave your mother goodbye/ by
summer you are hauling a piggy bank full of loose teeth/ the
Gods have forgotten you/ you are too old to believe in fairy tales
any way/ too grown to keep faith/ we met again in 2003 where I
caught her hiding pounds under my mattress to catch up for lost
time/ our mothers were the angels all along/ that day I learnt that
the truth is a matter of perspective/ that the sky burns orange
and red and purple and blue

it just depends on the time of day you look up.

© Rue Gumbochuma



www.nationalpoetryday.co.uk

Activities:

Small Group Task

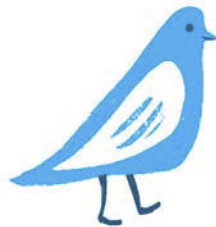
In small groups of 4-5 people, spend 5 minutes sharing and noting responses with each other to the following questions:

- What are your favourite childhood stories or fantasy figures?
- Which ones did you believe to be true and why?
- When did you find out the truth and how did it make you feel?

Classroom Task

All stories, whether it be fiction or folklore usually contain elements of truth. In 'The Truth' poem above, Rue finds out that the Tooth Fairy story is not real in the mythical sense, but exists as her mother who assumed this role to protect her innocence and imagination as a young child.

- Share your responses from the group task
- Would you have preferred to be told the truth when you were younger or did you enjoy believing in these childhood stories?



'The Truth' poem by Rue Gumbochuma uses several poetic devices such as;

- Line breaks
- Prose
- Simile
- Metaphor

- Identify the poetic devices used and any additional techniques you can use to write a poem
- Define each poetic device identified

Individual Task

The truth can sometimes be hard to hear or tell and multiple truths can coexist.

How important is it to be open minded and willing to learn?

Write a poem about one of the childhood stories you believed to be true though you've since found out it isn't.

- Briefly describe the story
- Why did you believe it was true?
- How did believing in the story make you feel?
- How did you find it wasn't real?
- How did that make you feel?
- What was the real truth?

