

Study **Figure 3**, a 1: 50 000 Ordnance Survey map extract of part of the Wye Valley, Wales.

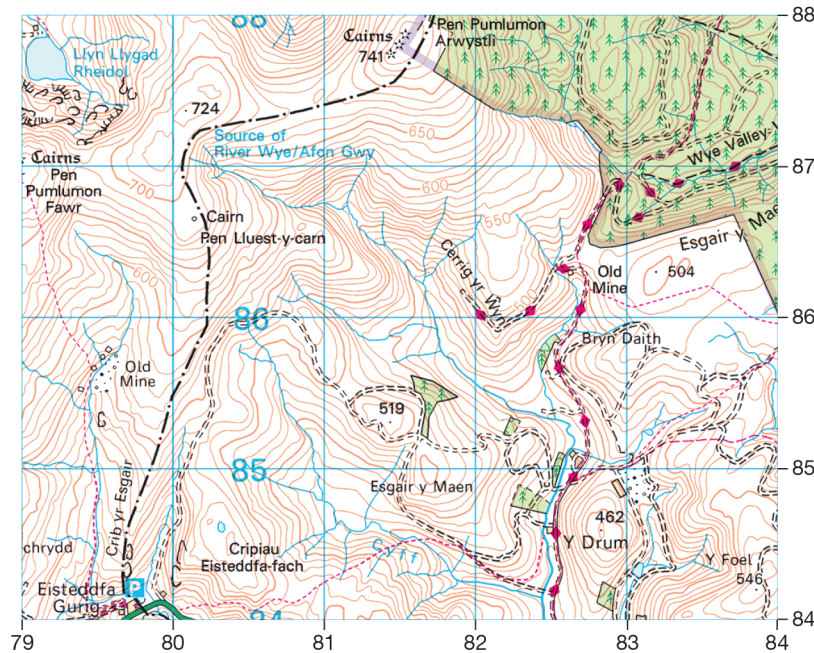


Figure 3

- ③ Using **Figure 3**, give **two** pieces of evidence to show that this is the upper course of a river. (4 marks, ★★)

Evidence 1:

.....

Evidence 2:

.....

- ④ State **two** ways in which the cross section of a river changes from source to mouth. (2 marks, ★)

1

2

- ⑤ Explain how the size of sediment in a river changes from source to mouth. (4 marks, ★★★)

.....

.....

.....

.....

.....

.....

.....

.....



NAILIT!

When referring to specific features on an Ordnance Survey map, it is a good idea to give a four- or six-figure grid reference to show where you have found your evidence.