

SHEVOLUTION QUIZZES

THE BEGINNING

Hint: Use pages 7–9 to help you.

Mitochondrial DNA is only passed on from our mothers. True or false?

- a. True
- b. False

Where did Eve live?

- a. Australia
- b. Southern Africa
- c. Norway

In recent years, what item have historians found in Stone-Age graves for women?

- a. Spear
- b. Paintbrush
- c. Needle

GODS & GODDESSES

Hint: Use pages 10–14 to help you.

In the Bronze Age, how did people think the gods sent them messages?

- a. Weather
- b. Constellations
- c. Dreams

What alternative form did Bastet, daughter of the Sun god, take?

- a. Bird
- b. Snake
- c. Cat

What item was thought to have been used for communicating with the gods?

- a. Ring
- b. Mirror
- c. Brooch



SHEVOLUTION QUIZZES

FEMALE WRITERS

Throughout history there have been some fantastic female writers. Can you match the book title to its author? You can use pages 20, 51, 56, 72, and 77 to help you.

Middlemarch

Wuthering Heights

The Book of the City of Ladies

Little Women

The Electric Arc

The Feminine Mystique

Silent Spring

Louisa May Alcott

Christine de Pizan

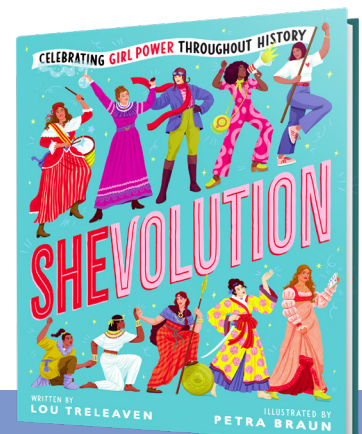
Emily Brontë

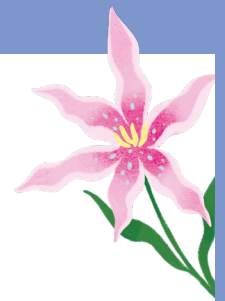
Rachel Carson

Betty Friedan

Hertha Ayrton

Mary Ann Evans





SHEVOLUTION QUIZZES

THE CURES

In the Middle Ages, people would seek out the village wise woman for advice on cures for illnesses. Read the advice below from the Distaff Gospels. Do you know what they're trying to cure? You can use pages 24–25 to help you.

Advice: Ride a bear for nine paces.

To cure:

Advice: Wear a birthing girdle made of parchment with special prayers on it.

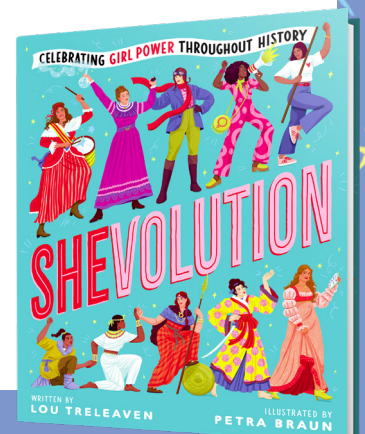
To cure:

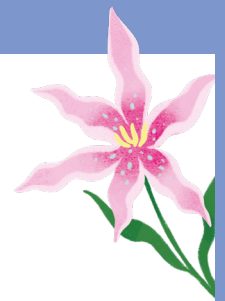
Advice: Don't eat a cat's head.

To cure:

Advice: Never wipe your bottom with a leaf.

To cure:





SHEVOLUTION QUIZZES

MEDIEVAL JAPAN

In medieval Japan, women had a variety of different roles.

Can you match the roles to what they mean? You can use pages 26–27 to help you.

Poetic Immortal

An aristocratic warrior

Samurai

A poet

Kunoichi

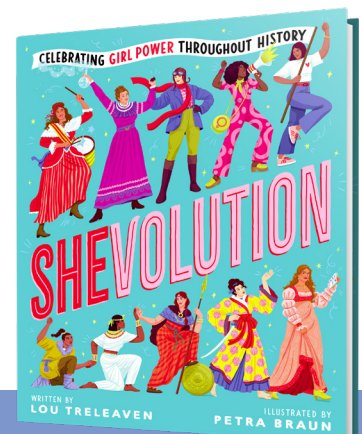
An entertainer turned assassin

Geisha

A person who sells goods

Merchant

A female ninja



SHEVOLUTION QUIZZES

THE WITCHING HOUR

Hint: Use page 32 to help you.

What was the witch-hunting manual called?

- a. The Hammer of Witches
- b. The Axe of Witches
- c. The Fire of Witches

Who was known as ‘the Great Witch’?

- a. Elizabeth Johnson Junior
- b. Inanna
- c. Margaret Aitken

Whereabouts did the Salem witch trials take place?

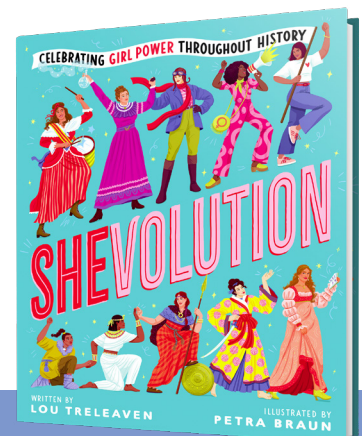
- a. Massachusetts
- b. Indiana
- c. Washington

How many people were accused of being witches in the Salem witch trials?

- a. 20
- b. 64
- c. 200

In which country and century was Margaret Aitken accused of being a witch?

- a. Germany, 19th century
- b. Scotland, 16th century
- c. France, 15th century





SHEVOLUTION QUIZZES

WOMEN IN STEM

Each of these women worked in a STEM (Science, Technology, Engineering and Mathematics) field. Can you write down their job title and what they are famous for? You can use pages 44, 56, 66 and 78 to help you.

Mary Anning

Job:

What are they famous for?

.....

.....

Marie Curie

Job:

What are they famous for?

.....

.....

Nettie Stevens

Job:

What are they famous for?

.....

.....

Katherine Johnson

Job:

What are they famous for?

.....

.....

Beatrice Shilling

Job:

What are they famous for?

.....

.....

Valentina Tereshkova

Job:

What are they famous for?

.....

.....

SHEVOLUTION QUIZZES

WARTIME WOMEN

Hint: Use pages 60–68 to help you.

Violette Szabo received the George Cross medal for bravery for her role as what?

- a. A nurse
- b. A spy
- c. An engineer

What did women have to do to qualify as a codebreaker during the Second World War?

- a. Complete a crossword in a newspaper
- b. Build a computer
- c. Decipher a secret message

Which one of these women was not a nurse during the First World War?

- a. Florence Nightingale
- b. Marie Curie
- c. Mary Seacole

SLAVERY & CIVIL RIGHTS

Hint: Use pages 48 and 74 to help you.

What campaign did Rosa Parks start?

- a. The Freedom Rides
- b. The Sit-ins
- c. The Montgomery Bus Boycott

In what century was slavery abolished?

- a. 19th
- b. 16th
- c. 20th

Who gave the 'Ain't I a Woman?' speech in 1851?

- a. Harriet Tubman
- b. Sojourner Truth
- c. Mary Prince





SHEVOLUTION QUIZZES

FEMALE LEADERS & GROUPS

To enact change in history, women have been a part of many influential groups. Match the woman to the group they were a part of. You can use pages 44, 54, 74, 82 and 88 to help you.

Tarana Burke

Emily Davison

Alicia Garza

Sophia Jex-Blake

Rosa Parks

Marina Grasse

The Suffragettes

A group that campaigned for women's rights

The MeToo Movement

An organization to help survivors of sexual violence

Black Lives Matter

An organization that highlights racism

East-West European Women's Network

A group that helped women after the German reunification

Edinburgh Seven

A group that campaigned for women to go to university

The Civil Rights Movement

A protest movement to end discrimination against African-Americans

SHEVOLUTION QUIZZES

ANSWERS

The Beginning

1. a) True
2. b) Southern Africa
3. a) Spear

Gods & Goddesses

1. c) Dreams
2. c) Cat
3. b) Mirror

Female Writers

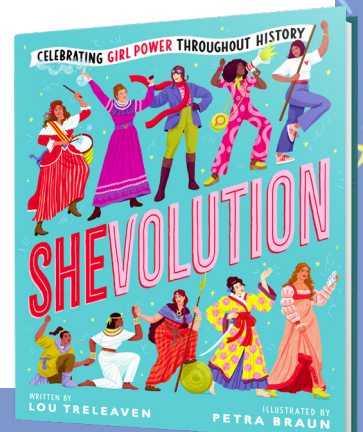
1. Mary Ann Evans – Middlemarch
2. Emily Brontë – Wuthering Heights
3. Christine de Pizan – The Book of the City of Ladies
4. Louisa May Alcott – Little Women
5. Hertha Ayrton – The Electric Arc
6. Betty Friedan – The Feminine Mystique
7. Rachel Carson – Silent Spring

The Cures

1. To cure... you from nine different diseases.
2. To cure... your labour pains.
3. To cure... your tremors.
4. To cure... your back pain.

Medieval Japan

1. Poetic Immortal – A poet
2. Samurai – An aristocratic warrior
3. Kunoichi – A female ninja
4. Geisha – An entertainer turned assassin
5. Merchant – A person who sells goods



SHEVOLUTION QUIZZES

The Witching Hour

1. a) The Hammer of Witches
2. c) Margaret Aitken
3. a) Massachusetts
4. c) 200
5. b) Scotland, 16th century

Women in STEM

1. Mary Anning – Palaeontologist, she discovered dinosaurs and was a pioneer of the study of fossilized poo.
2. Marie Curie – Scientist, she developed a mobile x-ray machine.
3. Nettie Stevens – Scientist, she discovered that sex is determined by X and Y chromosomes.
4. Katherine Johnson – Mathematician, she helped get the first American astronauts into space.
5. Beatrice Shilling – Engineer, she developed new technology for aircrafts.
6. Valentina Tereshkova – Cosmonaut, she was the youngest woman to go into space.

Wartime Women

1. b) A spy
2. a) Complete a crossword in a newspaper
3. b) Marie Curie

Slavery & Civil Rights

1. c) The Montgomery Bus Boycott
2. a) 19th
3. b) Sojourner Truth

Female Leaders & Groups

1. Tarana Burke – The MeToo Movement
2. Emily Davison – The Suffragettes
3. Alicia Garza – Black Lives Matter
4. Sophia Jex-Blake – Edinburgh Seven

